

Behavioral Health of Cambria County

Annual Report to the
Community

Friday,
December 2nd, 2022
10:00am



Peer Support

- <https://twitter.com/i/status/1580985212241993728>

BHoCC Staff

Executive Director: Tanya Kvarta

Clinical/Quality Director: Elyse Kirchner

Chief Fiscal Officer: Joe Crisi


Executive Assistant: Rebecca Valle

Board of Directors: Commissioners

Thomas Chernisky

Scott Hunt

B.J. Smith



BHoCC is a private, non-profit organization which is contracted with Cambria County to oversee the Behavioral Health HealthChoices program and the MCO (Magellan Behavioral Health of Pennsylvania).

Calendar Year 2022 HealthChoices enrollment for Cambria County

Where are we now?

Current enrollment:

As of September 30th, 2022:

37,827

Services In-Network for Cambria County

Child/Adolescent:

- Outpatient
- Crisis
- Blended Case Management
- Summer Treatment Programs
- After School Treatment Programs
- BHRS including Brief Treatment Model
- Partial Hospitalization Programs
- Residential Treatment
- Drug and Alcohol Inpatient Treatment
- Family Based
- PCIT
- TIP

Adult:

- Outpatient
- Crisis
- Blended Case Management
- Peer Support and Certified Recovery Specialist
- Partial Hospitalization Program
- Drug and Alcohol
- Inpatient Treatment
- Methadone
- TIP



Accessing Services

Pennsylvania requires that all HealthChoices members have reasonable access to in-county options for many levels of care.

Access Standards

Level of Care	Mental Health / Substance Abuse	Choice Requirement	Time Standard
Inpatient Psych	Mental Health	Choice of 2	1 Within 60 minutes
Inpatient Psych - Child Adolescent	Mental Health		
Crisis Intervention Services	Mental Health	Choice of 1	No Distance Requirement
Family Based Services	Mental Health	Choice of 2	No Distance Requirement
Mental Health Outpatient	Mental Health	Choice of 2	2 Within 60 Minutes
Mental Health PHP	Mental Health	Choice of 2	2 Within 60 Minutes
Mental Health PHP - Child Adolescent	Mental Health	Choice of 2	1 Within 60 minutes
BHRS	Mental Health	Choice of 2	No Distance Requirement
Clozapine Support	Mental Health	Choice of 2	2 Within 60 Minutes
Peer Support	Mental Health	Choice of 2	No Distance Requirement
Residential Treatment Facility (RTF)	Mental Health	Choice of 2	1 Within 60 minutes
Blended Case Management	Mental Health	Choice of 2	No Distance Requirement
Substance Abuse Services			
Inpatient Detox (4A)	Substance Abuse	Choice of 2	1 Within 60 Minutes
Inpatient Detox (4A) Child Adolescent	Substance Abuse	Choice of 2	1 Within 60 Minutes
Inpatient Rehab (4B)	Substance Abuse	Choice of 2	1 Within 60 Minutes
Inpatient Rehab (4B) Child Adolescent	Substance Abuse	Choice of 2	1 Within 60 Minutes
D&A Outpatient	Substance Abuse	Choice of 2	2 Within 60 Minutes
Methadone Maintenance	Substance Abuse	Choice of 2	2 Within 60 Minutes

Exceptions

D&A Inpatient Hospital Detox. - Adult

D&A Inpatient Hospital Detox. - Adolescent

D&A Inpatient Rehab - Adult

D&A Inpatient Rehab - Adolescent

Residential Treatment Facilities (RTF)

Adult Partial Hospitalization

HealthChoices members per level of care- data as of Sept 2022

Children

received mental health treatment.

(including IBHS, inpatient and outpatient)

4,303

Adults

Drug & Alcohol (includes Methadone)— 2,721

Inpatient psych—281

Outpatient—6,956

Partial Hospitalization--9

Dollars per Level of Care

Dollars spent for highest levels of care

All Children services- \$6,819,212.42

IBHS: \$3,825,340

Inpatient Psych: \$1,485,702

Outpatient: \$1,508,170

Adults

Drug and Alcohol- (includes Methadone) \$5,416,087

Inpatient Psych \$2,070,422

Outpatient Psych \$2,945,267

Partial Hospitalization: \$49,999

*Data courtesy of MBH-PA

Initiatives

CANS:

- Outcomes for IBHS (Intensive Behavioral Health Services)

D&A: Increase in education, prevention and outreach with Opioid use disorders and recovery

Suicide Education, Prevention and Training: Increase efforts to educate the community, local schools, network and members by providing various summits and trainings.

My Life (Magellan Youth Leaders Inspiring Future Empowerment): Youth empowerment program for ages 13-23 *4th Tuesday of each month from 4:30-5:30pm. Contact Camette Standley CMStandley@magellanhealth.com

Peer Recovery and Resiliency: Increase in peer oriented programming

Healing Arts Program with Mt. Aloysius College: Open art studio began at PEN on January 19, 2018.

Family Support Group the 4th Monday of the month at 6pm at PEN Drop-in center.

Goals for Cambria County 2023

- Increase access and quality of care for drug and alcohol services
- Increase member responses for CF ST
- Continue expanding the CANS initiative to improve quality of care for children's services
- Continue promoting evidence-based practices.
- Continue movement toward community-based services
- Continue to promote programming dedicated to recovery and resiliency
- Expand CPS and CRS programming and training

Goals for Cambria County 2023 Cont.

- Go live with the walk- in crisis by early 2023.
- Continue to focus on social determinants of health; specifically, Housing
- Continue to expand and promote Crisis Intervention Training program (CIT) for first responders, local police departments, etc.
- Increase Suicide Prevention, Education and Awareness
- Increase member participation and collaboration with initiatives
- Open a Recovery Community Center by Q1 of 2023 through reinvestment dollars.
- Collaborate with the Women's Help Center on Low Barrier Diversion in 2023 through reinvestment.



Community Support Program

Many Minds - One Recovery

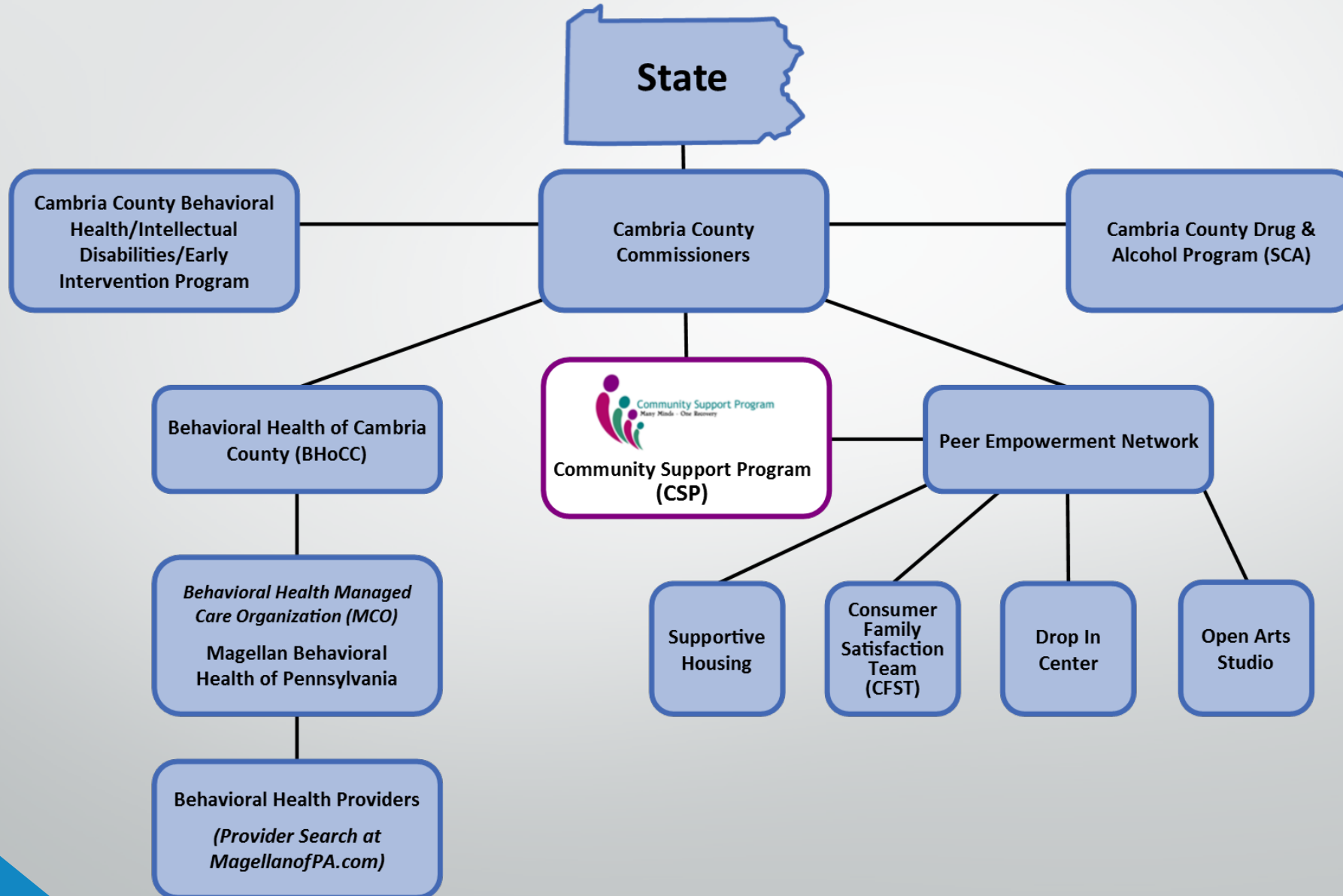
Community Support Program (CSP)

What is the Community Support Program (CSP)?

- The Community Support Program (CSP) is a coalition of mental health consumers, family members and professionals working to help adults with serious mental illnesses and co-occurring disorders live successfully in the community.
- CSP committees offer a forum in Pennsylvania where consumers, family members and professionals are united by a common set of beliefs and values and use their combined strengths to promote systems change.
- As a result, CSP Principles have helped to shape the way treatment services are delivered to consumers, improving the public's understanding that consumers and family members should be regarded as people first, and advocating for the implementation of quality evidence-based treatments that support and enhance the recovery of persons with serious mental illness.



Where does the Community Support Program (CSP) fit in?



CSP Presentations

- Tracy McQuown –Consumer Chair
- Victoria Bowser CPS/S- Secretary of CSP





CANS Impact in Cambria

Dan Warner, Ph.D.

Executive Director

Community Data Roundtable



Natalie Moldofsky BA, CPS, CPS/S

Recovery Support Navigator
MBH-PA

The impact of being a Certified Peer Specialist



Thank You for attending!

Thank You To Reba, MBH-PA,
Dr. Warner and CDR, CSP Tracy and Victoria
and Natalie Moldofsky, for your assistance!!

Questions?