

BEHAVIORAL HEALTH OF CAMBRIA COUNTY

- **ANNUAL REPORT TO THE COMMUNITY**
- FRIDAY,
- DECEMBER 10TH, 2021
- 10:00AM

- VIA ZOOM



BHOCC STAFF

Executive Director: Tanya Kvarta

Clinical/Quality Director: Elyse Kirchner

Chief Fiscal Officer: Joe Crisi

Executive Assistant: Rebecca Valle

Board of Directors:

Commissioners

Thomas Chernisky

Scott Hunt

B.J. Smith

.

BHoCC is a private, non-profit organization which is contracted with Cambria County to oversee the Behavioral Health HealthChoices program and the MCO (Magellan Behavioral Health of Pennsylvania).

4 CALENDAR YEAR 2021 HEALTHCHOICES ENROLLMENT FOR CAMBRIA COUNTY

Where are we now?

Current enrollment:

As of September 30th, 2021:

35,728

5 SERVICES IN-NETWORK FOR CAMBRIA COUNTY

- **Child/Adolescent:**

- Outpatient
- Crisis
- Blended Case Management
- Summer Treatment Programs
- After School Treatment Programs
- BHRS including Brief Treatment Model
- Partial Hospitalization Programs
- Residential Treatment
- Drug and Alcohol Inpatient Treatment
- Family Based
- PCIT
- TIP

- **Adult:**

- Outpatient
- Crisis
- Blended Case Management
- Peer Support and Certified Recovery Specialist
- Partial Hospitalization Program
- Drug and Alcohol
- Inpatient Treatment
- Methadone
- TIP

Accessing Services

Pennsylvania requires that all HealthChoices members have reasonable access to in-county options for many levels of care.

7

Access Standards

| Level of Care | Mental Health / Substance Abuse | Choice Requirement | Time Standard |
|---------------------------------------|---------------------------------|--------------------|-------------------------|
| Inpatient Psych | Mental Health | Choice of 2 | 1 Within 60 minutes |
| Inpatient Psych - Child Adolescent | Mental Health | | |
| Crisis Intervention Services | Mental Health | Choice of 1 | No Distance Requirement |
| Family Based Services | Mental Health | Choice of 2 | No Distance Requirement |
| Mental Health Outpatient | Mental Health | Choice of 2 | 2 Within 60 Minutes |
| Mental Health PHP | Mental Health | Choice of 2 | 2 Within 60 Minutes |
| Mental Health PHP - Child Adolescent | Mental Health | Choice of 2 | 1 Within 60 minutes |
| BHRS | Mental Health | Choice of 2 | No Distance Requirement |
| Clozapine Support | Mental Health | Choice of 2 | 2 Within 60 Minutes |
| Peer Support | Mental Health | Choice of 2 | No Distance Requirement |
| Residential Treatment Facility (RTF) | Mental Health | Choice of 2 | 1 Within 60 minutes |
| Blended Case Management | Mental Health | Choice of 2 | No Distance Requirement |
| | | | |
| Substance Abuse Services | | | |
| | | | |
| Inpatient Detox (4A) | Substance Abuse | Choice of 2 | 1 Within 60 Minutes |
| Inpatient Detox (4A) Child Adolescent | Substance Abuse | Choice of 2 | 1 Within 60 Minutes |
| Inpatient Rehab (4B) | Substance Abuse | Choice of 2 | 1 Within 60 Minutes |
| Inpatient Rehab (4B) Child Adolescent | Substance Abuse | Choice of 2 | 1 Within 60 Minutes |
| D&A Outpatient | Substance Abuse | Choice of 2 | 2 Within 60 Minutes |
| Methadone Maintenance | Substance Abuse | Choice of 2 | 2 Within 60 Minutes |

Exceptions

| |
|-------------------------------------------------------|
| D&A Inpatient Hospital Detox. - Adult |
| D&A Inpatient Hospital Detox. - Adolescent |
| D&A Inpatient Rehab - Adult |
| D&A Inpatient Rehab - Adolescent |
| Residential Treatment Facilities (RTF) |

9 HEALTHCHOICES MEMBERS PER LEVEL OF CARE- DATA AS OF SEPT 2021

Children

received mental health treatment.
(including IBHS, inpatient and outpatient)

2,255

Adults

Drug & Alcohol (includes Methadone)—
3,103

Inpatient psych—528

Outpatient—6,715

Partial Hospitalization--20

DOLLARS PER LEVEL OF CARE

Dollars spent for highest levels of care

All Children services- \$2,526,116.22

IBHS: \$781,912.34

Inpatient Psych: \$ 1,300,740.98

Outpatient: \$ 443,462.90

Adults

Drug and Alcohol- (includes Methadone) \$ 2,929,580.45

Inpatient Psych \$ 2,112,217.37

Outpatient Psych \$ 1,198,572.87

Partial Hospitalization: \$ 26,801.04

INITIATIVES

CANS:

- Outcomes for IBHS (Intensive Behavioral Health Services)
-

D&A: Increase in education, prevention and outreach with Opioid use disorders and recovery

Suicide Education, Prevention and Training: Increase efforts to educate the community, local schools, network and members by providing various summits and trainings.

My Life (Magellan Youth Leaders Inspiring Future Empowerment): Youth empowerment program for ages 13-23 *4th Tuesday of each month from 4:30-5:30pm. Contact Heidi Niebauer niebauerh@magellanhealth.com

Peer Recovery and Resiliency: Increase in peer oriented programming

Healing Arts Program with Mt. Aloysius College: Open art studio began at PEN on January 19, 2018.

12 GOALS FOR CAMBRIA COUNTY 2022

- Increase access and quality of care for drug and alcohol services
- Increase member responses for CF ST
- Continue expanding the CANS initiative to improve quality of care for children's services
- Continue promoting evidence-based practices.
- Continue movement toward community-based services
- Continue to promote programming dedicated to recovery and resiliency
- Expand CPS and CRS programming and training

13 Goals for Cambria County 2022 Cont.

- Go live with the walk- in crisis by Spring 2022
- Continue to focus on social determinants of health; specifically, Housing
- Continue to expand and promote Crisis Intervention Training program (CIT) for first responders, local police departments, etc.
- Increase Suicide Prevention, Education and Awareness
- Increase member participation and collaboration with initiatives
- Continue collaborating with providers in sponsoring trainings and speakers dedicated to Mental Health Awareness and D&A recovery

Community Support Program (CSP)



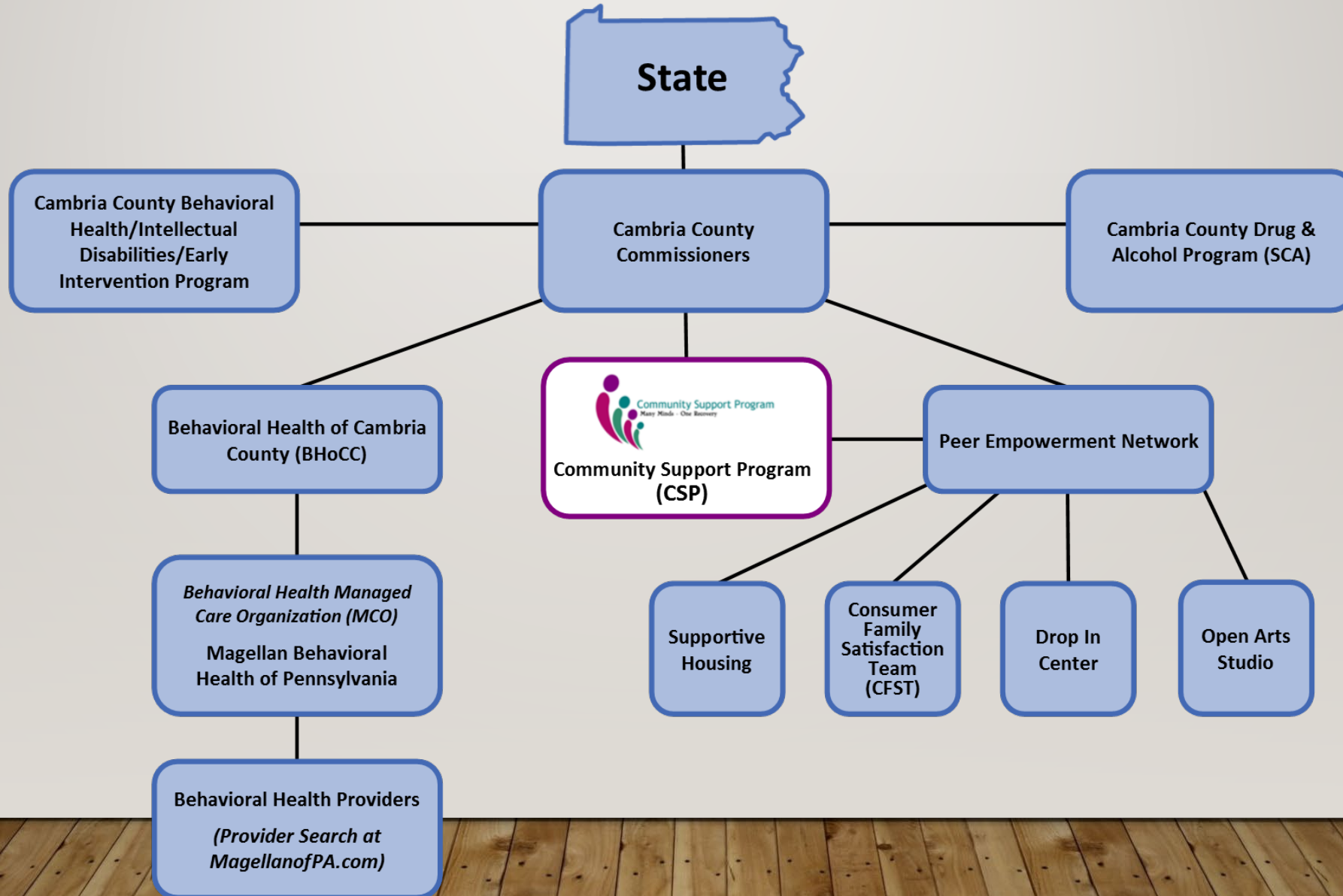
WHAT IS THE COMMUNITY SUPPORT PROGRAM (CSP)?

15

- The Community Support Program (CSP) is a coalition of mental health consumers, family members and professionals working to help adults with serious mental illnesses and co-occurring disorders live successfully in the community.
- CSP committees offer a forum in Pennsylvania where consumers, family members and professionals are united by a common set of beliefs and values and use their combined strengths to promote systems change.
- As a result, CSP Principles have helped to shape the way treatment services are delivered to consumers, improving the public's understanding that consumers and family members should be regarded as people first, and advocating for the implementation of quality evidence-based treatments that support and enhance the recovery of persons with serious mental illness.

Where does the Community Support Program (CSP) fit in?

16



17 CANS IMPACT IN CAMBRIA

Dan Warner, Ph.D.

Executive Director

Community Data Roundtable

18

PAULA EPPLEY-NEWMAN

EXECUTIVE DIRECTOR
BEGINNINGS, INC.

THE IMPACT OF FAMILY ENGAGEMENT IN EARLY
CHILDHOOD DEVELOPMENT

Thank You for attending!

Thank You To Reba, MBH-PA,
Dr. Warner and CDR, CSP and Paula
Eppley-Newman
for your assistance!!

Questions?